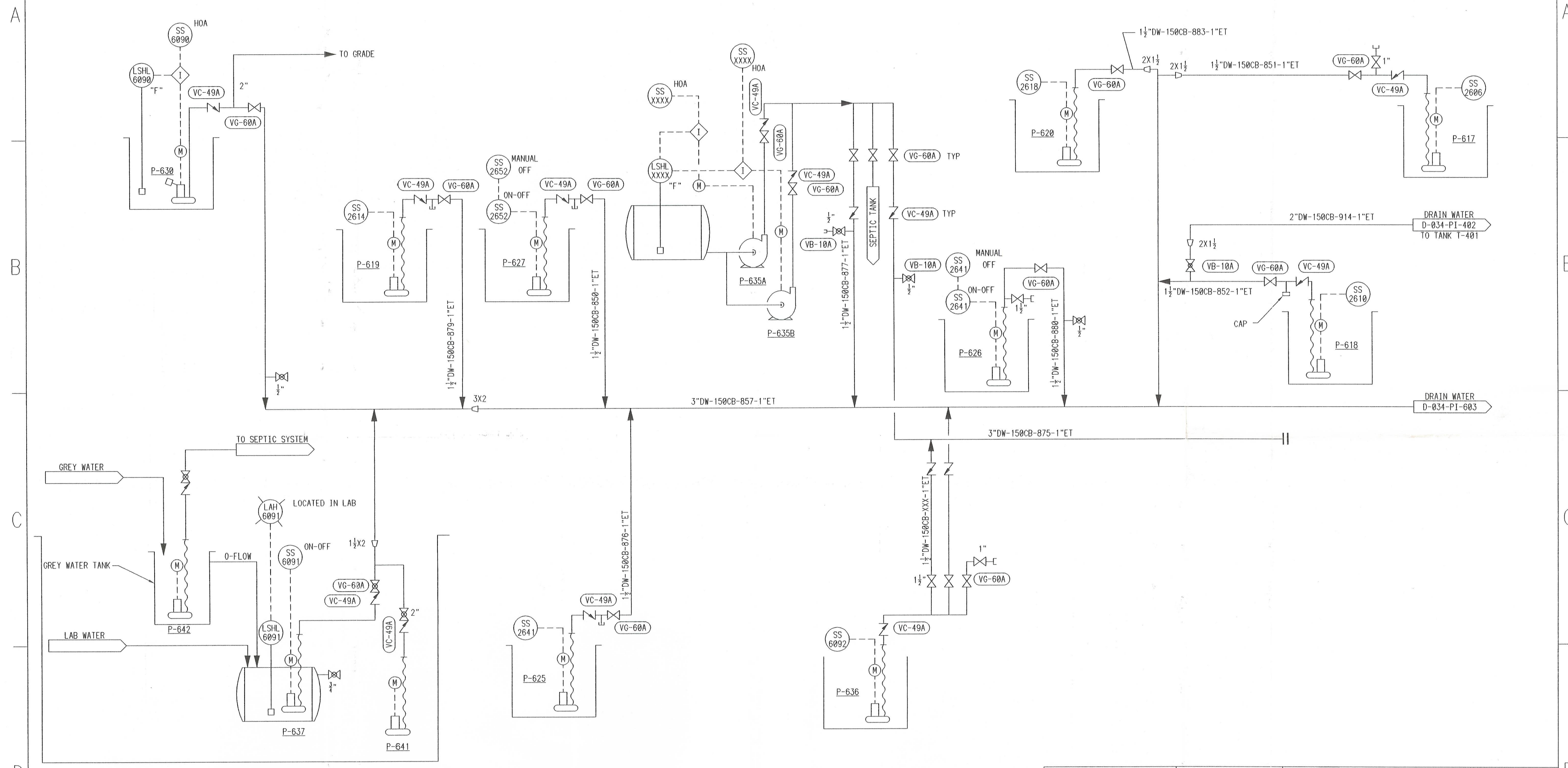


P-630 FIREWATER PUMPHOUSE SUMP PUMP  
 P-641 ADMINISTRATION BLDG PIT SUMP PUMP  
 P-642 ADMINISTRATION BLDG GREY WATER SUMP PUMP  
 P-637 ADMINISTRATION BLDG LAB WATER SUMP PUMP  
 P-619 BARREL RECEIVING EAST SUMP PUMP  
 P-625 BARREL RECEIVING WEST SUMP PUMP  
 P-627 CONTAINER PROCESSING SUMP PUMP  
 P-635A/B RECEIVING SERVICES SUMP PUMPS  
 P-636 MOTOR CONTROL CENTER SUMP PUMP  
 P-620 SLUDGE TANK AREA SUMP PUMP  
 P-617 TRUCK WASH SUMP PUMP  
 P-626 CONTAINER CONVEYOR SUMP PUMP  
 P-618 SLUDGE BASMENT SUMP PUMP

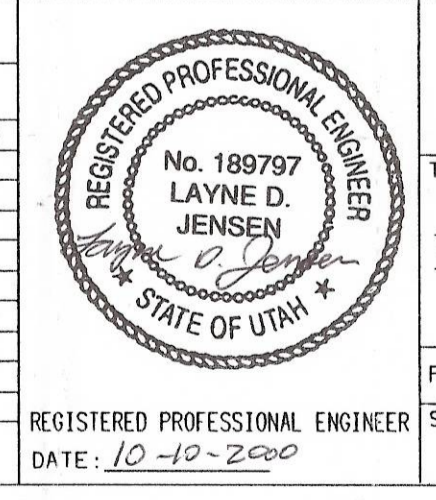


INTERLOCK DESCRIPTION	
NO	DESCRIPTION
1	ISSUED FOR CONSTRUCTION
2	REVISED PIPING OF P 614 A-D
3	AS BUILT UPDATE
4	GENERAL PUMP CHANGES
5	ADDED PIPELINE 2"DW-150CB-914

REVISIONS							
NO	DESCRIPTION	DATE	BY	CHK	ENG MGR	NO	DESCRIPTION
1	ISSUED FOR CONSTRUCTION	07-07-89	MU	IRB	JV	1	AS BUILT
2	REVISED PIPING OF P 614 A-D	02-22-90		TW	JV		
3	AS BUILT UPDATE	01-05-94	DCP				
4	GENERAL PUMP CHANGES	02-04-99	CRM				
5	ADDED PIPELINE 2"DW-150CB-914	7-12-00	GVC				

REVISIONS							
NO	DESCRIPTION	DATE	BY	CHK	ENG MGR	NO	DESCRIPTION
1	ISSUED FOR CONSTRUCTION	07-07-89	MU	IRB	JV	1	AS BUILT
2	REVISED PIPING OF P 614 A-D	02-22-90		TW	JV		
3	AS BUILT UPDATE	01-05-94	DCP				
4	GENERAL PUMP CHANGES	02-04-99	CRM				
5	ADDED PIPELINE 2"DW-150CB-914	7-12-00	GVC				

APPROVALS		
BY	DATE	DESCRIPTION
CRM	01-04-99	DRAWN
		CHECKED
		ELEC
		MECH
		STRUCT
		PROJECT ENG
		ENGINEERING MGR
		AS BUILT



**SAFETY-KLEEN (ARAGONITE), INC.**  
 1800 NORTH APTIUS ROAD, ARAGONITE, UT, 84029

TITLE: UTAH ENVIRONMENTAL SERVICE CENTER  
 INCINERATION PLANT FOR INDUSTRIAL WASTES  
 P&ID AREA SUMPS SHEET 1

FOR TOOLEE SITE  
 SCALE: 1"=10'-0"

CAD NO. I1902L  
 SAFETY-KLEEN DWG NO. D-034-PI-602  
 REV 5